



Release Notes

Version 7.2

Build 2

Warranty and Limitations

Volicon Inc. will not be held responsible for failures or errors in the text of this document, nor liable for any claims from any third party. Documentation is provided as is. All conditions, representations and warranties, expressed or implied are disclaimed, except to the extent that such disclaimers are held to be legally invalid. This document contains proprietary information belonging to Volicon Inc. Such information is supplied solely for assisting properly authorized users of Volicon Inc. systems. No part of its contents may be used for any other purpose, disclosed to any person or firm. No part of this document shall be copied, used for commercial purposes or passed to any third party for any use, without approval from Volicon Inc. The text and graphics are for the purpose of illustration and reference only. The information herein is subject to change without notice.

Document Details

Document Name:	Observer Release Notes 7.2 QB2
Related Software Versions:	CS = 7.2.44188 Probe = 7.244089

Contents

1. INTRODUCTION.....	4
1.1 PURPOSE.....	4
1.2 DEFINITIONS AND ACRONYMS.....	4
1.3 GENERAL.....	4
1.4 HARDWARE CONSIDERATIONS.....	4
1.5 VERSION INTEROPERABILITY.....	5
1.6 OPERATING SYSTEMS.....	5
1.6.1 CS Installations.....	5
1.6.2 Probe Installations.....	5
1.6.3 PC Client Installations.....	5
1.7 CAPTURE CARDS.....	5
1.7.1 Transport Stream Capture cards.....	5
1.7.2 Other Capture cards.....	5
1.8 MULTIPLE BROWSERS.....	6
1.8.1 Internet Explorer.....	6
2. NEW FEATURES.....	7
2.1 WALL OF MONITORS MODE.....	7
2.1.1 Entering Wall of Monitors mode:.....	7
2.2 FRAME COLOR ALERT NOTIFICATION.....	9
2.2.1 Red: Video Alert.....	9
2.2.2 Yellow: Audio Alert.....	9
2.2.3 Blue: Other Alerts.....	9
2.2.4 Configuration:.....	10
2.3 CLIENTLESS – SILVER LIGHT AND FLASH PLAYERS.....	11
2.3.1 Introduction.....	11
2.4 IE11 SUPPORT.....	11
3. KNOWN BUGS AND LIMITATIONS.....	13
3.1.1 General notes.....	13
3.1.2 Known defects, bugs and Limitations.....	13
3.1.2.1 Clientless Limitations:.....	13
3.1.2.2 Multi-View Limitations:.....	13
3.1.2.3 Export Limitation:.....	13
3.1.2.4 General Limitation:.....	14
4. APPENDIX.....	14
4.1.1.1 Keyboard available shortcuts:.....	14

1. Introduction

1.1 Purpose

This document covers new features and known limitations for release 7.2 QB2.

1.2 Definitions and Acronyms

The following table defines the acronyms or terms used in this document:

Services	A/V programs along with associated metadata.
ARL	As Run logs
TS	Transport Stream
MH	Media Hub – internal Observer component
Encoder	Observer module that receives and processes media signals
CS	Central Server
IE	Internet Explorer

1.3 General

This is a major release with new features including:

- 64 bit player interface
- Multi-View mode
- Multicast mode
- PHP Update to version 5.5.20
- Apache Update to version 2.4.10

1.4 Hardware Considerations

A system running Observer version 6.2 or higher can be upgraded to version 7.2. However for earlier versions (such as 6.1, 6.0, 5.6), please consult our Support Department.

1.5 Version Interoperability

Due to a new protocol in 7.2 QB2, the central server probes and player software need to have the same release version and build numbers.

1.6 Operating Systems

1.6.1 CS Installations

- Windows 2008 x64, x32
- Windows 7 x64
- Windows 2012

1.6.2 Probe Installations

- Windows 2008 x64
- Windows 7 x64

1.6.3 PC Client Installations

- Windows 7
- Windows 8

1.7 Capture cards

1.7.1 Transport Stream Capture cards

- Hauppauge
- Dektec
- Latest driver in use:
 - Driver Version 4.10.0.144
 - Hauppauge : Hauppauge WinTV-HVR-2255 (old 2250) Driver Version 7.9.1.32199 (Driver Date 07/18/2014)
 - Supported: DTA 2135, DTA 2136, DTA 2137, DTA 2145, DTA 2160

1.7.2 Other Capture cards

- Blackmagic
- Ospray

1.8 Multiple Browsers

The following user interface browsers are supported:

Windows:

- Chrome
- Firefox
- Internet Explorer

Mac

- Safari

1.8.1 Internet Explorer

The following 32 and 64 bit browsers are supported:

- IE9
- IE10
- IE11 (in compatibility mode)

2. New Features

2.1 Wall of Monitors Mode

The 64 bit mode allows the users to simultaneously open a large amount of players without creating any additional memory consumption.

**In case of using IE10 or IE11 the following installer needs to run on the client to configure Internet Explorer to run in 64 bit mode. (Client machines running IE9 and below, have two different .exe files: 32 bit and 64 bit).



SetIE64.exe

2.1.1 Entering Wall of Monitors mode:

As shown below, when in 64 bit mode, it is possible to open multiple players without losing any functionality.

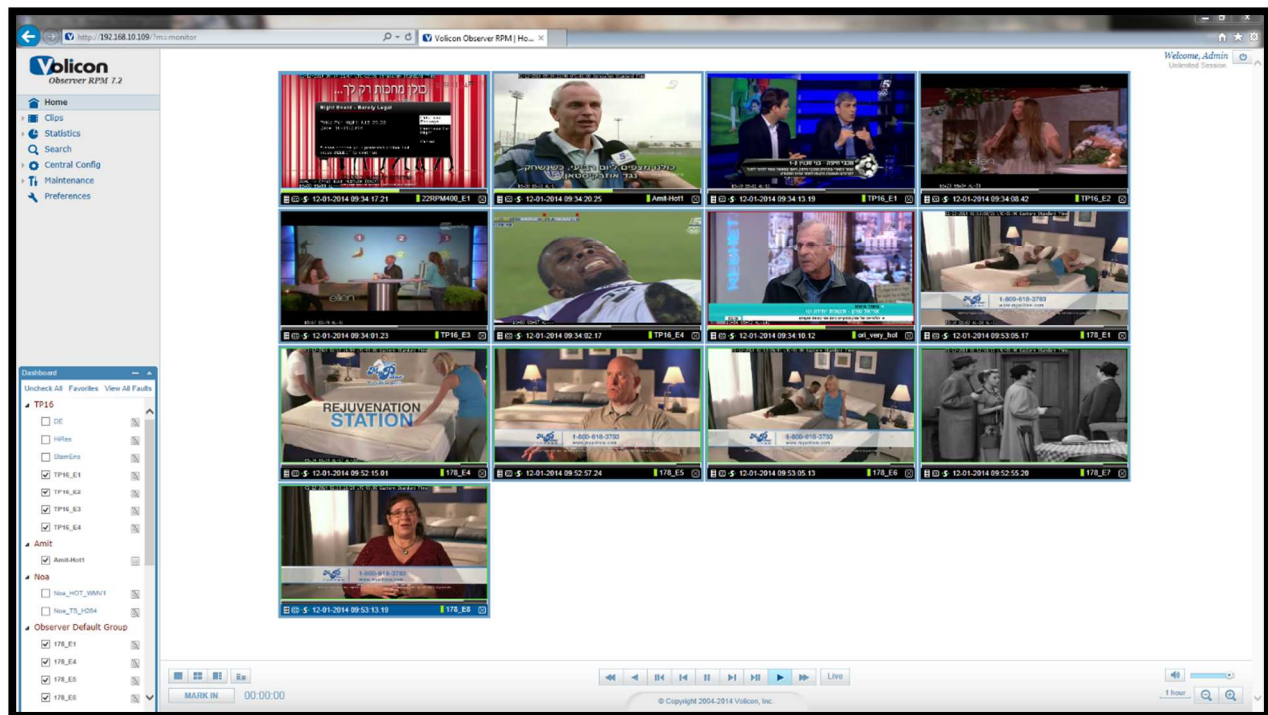


Figure 2.1.1.1: 64 bit Mode – Multiple Players

In 32 bit mode, after the user opens more than six players simultaneously, Multiview Mode is automatically enabled. This default can be readjusted by Volicon Support if required. When in Multiview Mode functionality is limited.

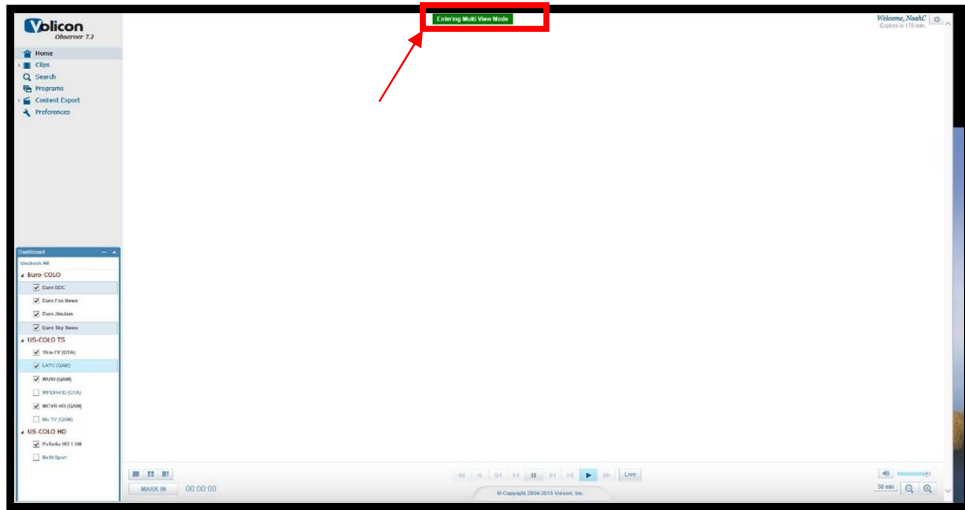


Figure 2.1.1.2: 32 bit Mode – Multiple Players Entering “Multiview Mode”

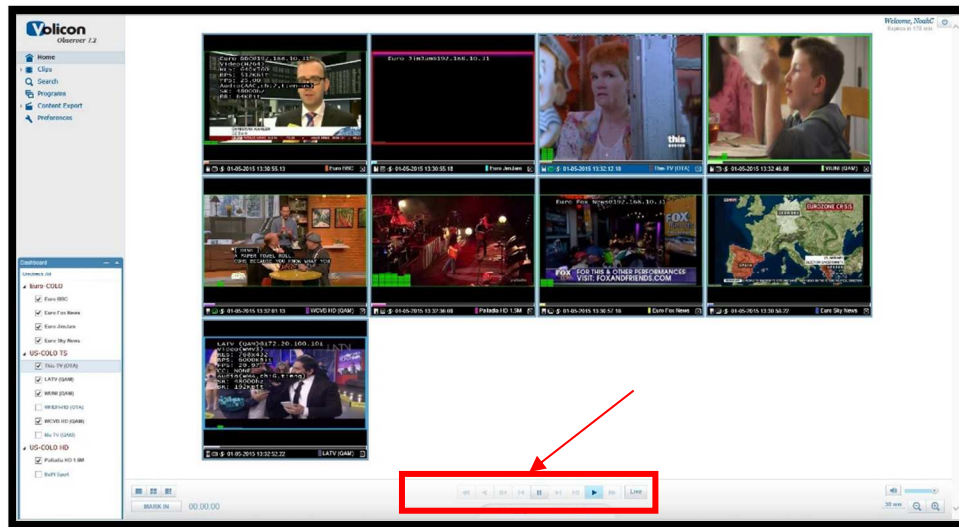


Figure 2.1.1.3: 32 bit Mode – “Multiview Mode”

2.2 Frame color alert notification

The encoder and stream faults are conveyed to users through a color coded player frame surrounding the player displays. It reflects the live, real-time alert status of the encoders even during playback of stored media.

2.2.1 Red: Video Alert

Video alert displayed with precedence over other (lower priority such as audio) media alerts when they are detected simultaneously – displayed as a red frame around its channel display.

2.2.2 Yellow: Audio Alert

Audio alert displayed with precedence over lower, such as dial or script error alerts, when detected simultaneously – displayed as a yellow frame around its channel display.

2.2.3 Blue: Other Alerts

Low priority such as dial or script error alerts are displayed as a blue frame around its channel display

Video - RED

'VIDEO_LOST'

'VIDEO_BLACK_AUDIO_LOW'

'VIDEO_BLACK_AUDIO_HIGH'

'VIDEO_BLACK',

'VIDEO_STATIC_AUDIO_LOW'

'VIDEO_STATIC_AUDIO_HIGH'

'VIDEO_STATIC'

Audio - YELLOW

'AUDIO_LOW'

'AUDIO_HIGH'

Other – BLUE

'SCRIPT_ERROR'

'DIAL_ERROR'

Note that video alerts take precedence over audio alerts, which take precedence over "other" alerts...
i.e.:
VIDEO > AUDIO > OTHER.

2.2.4 Configuration:

Frame color alert notifications is enabled in the Preferences (Web) page:

PREFERENCES

Expand All Collapse All

Settings

[Reset](#) Uncheck all players on the Home page

Set seekbar duration to 1 hour

Timezone System Timezone Settings

Default audio language English - United States

Timestamps on CC export

Play live on last selected channels

Show frame in live mode

Show alert's frame

Limit returned results by CC search to 1000

Select default CC state Off

Select default XDS state Off

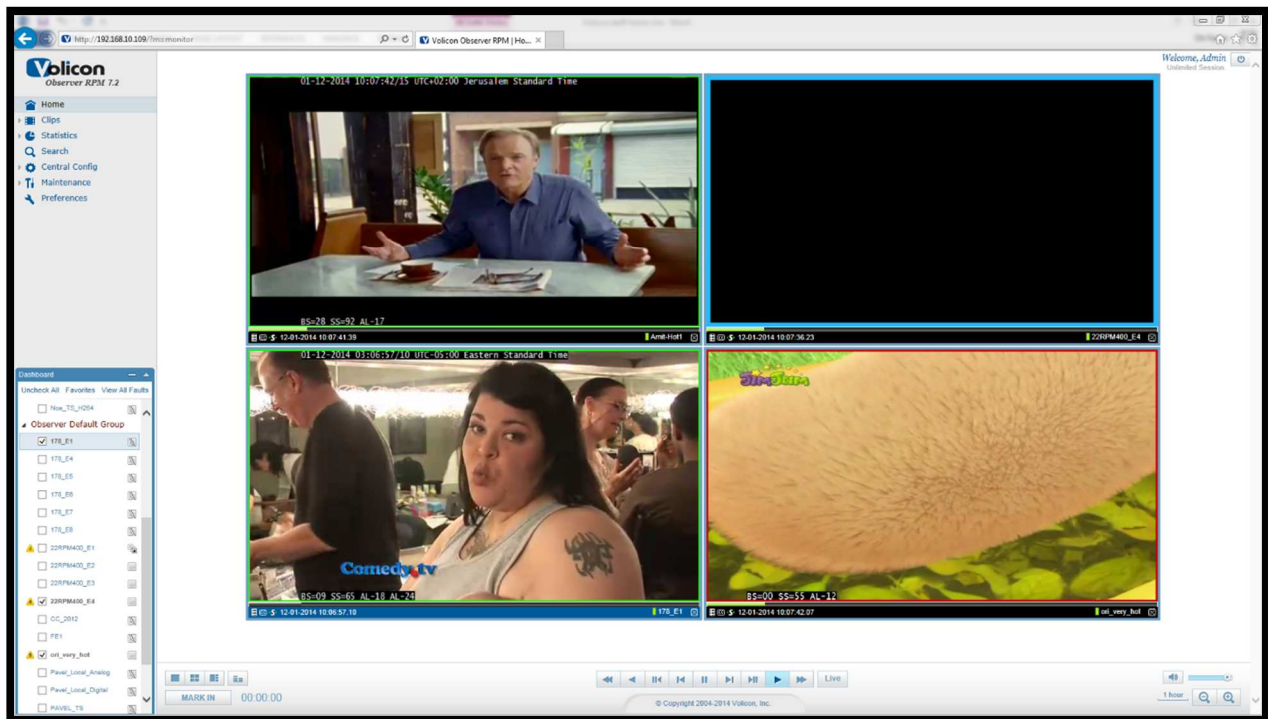
Select default Loudness meter state Off

Monitor Auto Live Interval None

[Apply](#)

[Change Password](#)

[Keyword Alerts](#)



2.3 Clientless – Silver Light and Flash Players

2.3.1 Introduction

In order to avoid the need to install a player on the Client machine, a Clientless option has been developed for use with Chrome, Safari, and Firefox browsers. Please see section 3.1.2 for Known Limitations.

2.4 IE11 Support

- **IE11 requires a specific procedure in order to work with the Observer system. This procedure has been laid out below:**

**If the Observer website is running on IE11 and the compatibility mode for that site was not enabled, the user will be prompted to install Silverlight.

1. Open IE11 and click on “Tools” (Alt+X) from the bar at the top of the screen. From the dropdown that appears select “Compatibility View settings”.

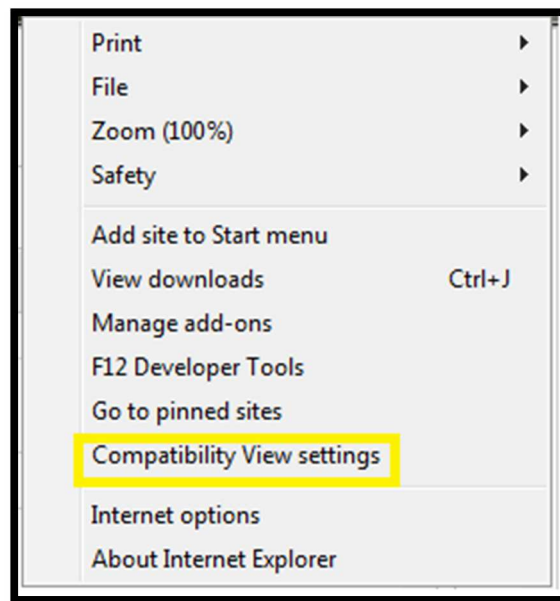


Figure 2.4.1: “Tools” Dropdown

2. A new window will open as shown in Figure 2.4.2. Under the “Add this website:” section, insert the IP of the Volicon system and then click “Add”:

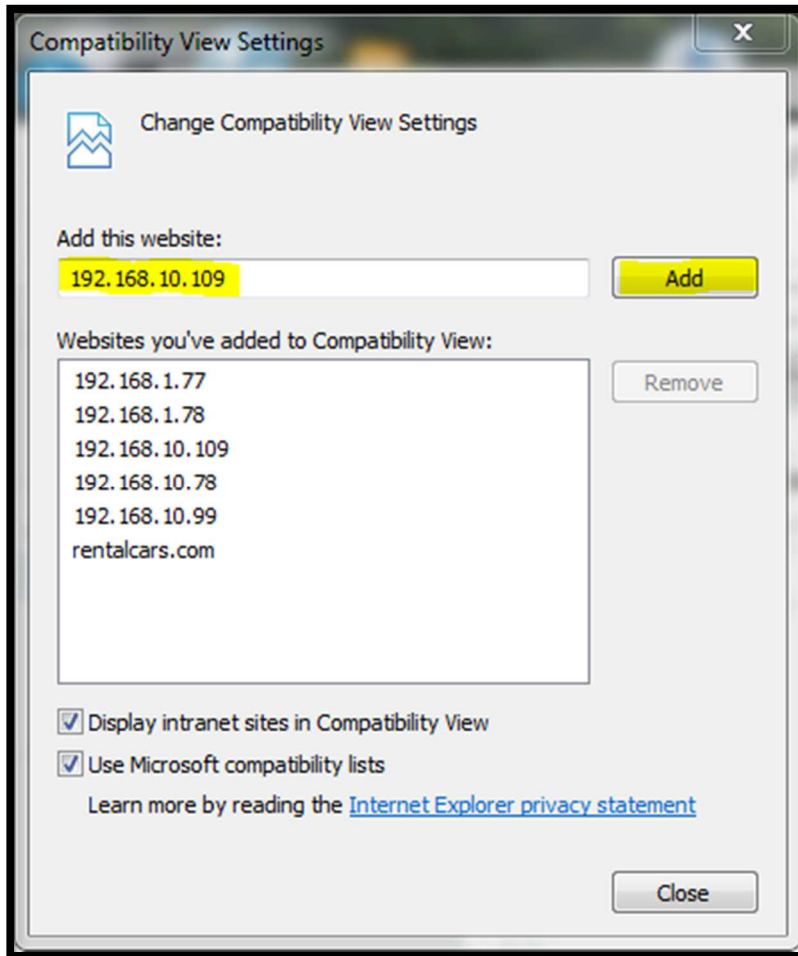


Figure 2.4.2: “Compatibility View Settings” Window

3. Click “Close” at the bottom of the “Compatibility View Settings” Window and Compatibility view mode will now be enabled for that site.

**This process needs to be repeated for each Volicon site that will be accessed by the Client Machine.

3. Known Bugs and Limitations

3.1.1 General notes

- In case of accessing the observer from Chrome, Firefox, and Safari, the ActiveX player will not be installed, which means that not all the features with the ActiveX player will be available. Please check the limitations section in the Clientless documentation.
- ***During installation/upgrade the system (CS and Probe) may require restart.***

3.1.2 Known defects, bugs and Limitations

3.1.2.1 Clientless Limitations:

Description
Does not support video export
Player bottom bar will not show frames
Clip preview is not available on clientless browsers
Split screen/PIP is not supported
After restart of encoder, Silverlight player can flicker/stick → Press the “Live” button to resolve.

3.1.2.2 Multi-View Limitations:

Description
Graph buttons will not be displayed
Only Pause and Play Live buttons are enable.

3.1.2.3 Export Limitation:

Description
H.264 to asf export is not supported

3.1.2.4 General Limitation:

Description
Encoder names cannot contain spaces
IE 11 is supported only with use of Compatibility Mode
Multiview Mode – Explorer may crash
Client Windows 2008 64 bit requires manual installation of Silverlight 32 bit

4. Appendix

4.1.1.1 Keyboard available shortcuts:

In addition to enhancing player control in general, the keyboard shortcuts complement the Multi-view monitoring and clientless player functions in particular.

Key	Function
L	Live
P	Picture in picture
S	Split screen
F	Full screen
M	Mute/unmute
D	Switch between main and expanded display
Z	Fast reverse
X	Normal reverse
C	Slow reverse
<Spacebar>	Pause/play
V	Slow forward
B	Normal forward
N	Fast forward
I	Image snapshot
<Cursor up/down>	Volume up/down
mouse scroll <up/down>	Single frame forward/backward
<'>	Cut clip <mark in/mark out>